

BALDOR® • **RELIANCE**

Product Information Packet

37E450X56

10HP,3450RPM,3PH,60HZ,215JM,3735M,TEFC,F

Part Detail							
Revision:	U	Status:	INA/A	Change #:		Proprietary:	No
Type:	AC	Prod. Type:	3735M	Elec. Spec:	37WGX056	CD Diagram:	CD0005
Enclosure:	TEFC	Mfg Plant:		Mech. Spec:	37E450	Layout:	37LYE450
Frame:	215JM	Mounting:	F1	Poles:	02	Created Date:	
Base:	RG	Rotation:	R	Insulation:	F	Eff. Date:	11-23-2009
Leads:	9#14					Replaced By:	
Literature:		Elec. Diagram:					

Nameplate NP1256L							
CAT.NO.							
SPEC.	37E450X56						
HP	10						
VOLTS	208-230/460						
AMP	26.5-24/12						
RPM	3450						
FRAME	215JM	HZ	60	PH	3		
SER.F.	1.15	CODE	J	DES	B	CLASS	F
NEMA-NOM-EFF	85.5	PF	91				
RATING	40C AMB-CONT						
CC		USABLE AT 208V	25				
DE	6309	ODE	6206				
ENCL	TEFC	SN					

Parts List		
Part Number	Description	Quantity
SA030792	SA 37E450X56	1.000 EA
RA026831	RA 37E450X56	1.000 EA
HW3200A01	3/8-16X3/4 I-BLT WELDED F/S	1.000 EA
37CB1001A05	CONDUIT BOX, MACH	1.000 EA
37GS1000SP	GASKET, CONDUIT BOX STD., .06 THICK LEXI	1.000 EA
51XW2520A12	.25-20 X .75, TAPTITE II, HEX WSHR SLTD	2.000 EA
11XW1032G06	10-32 X .38, TAPTITE II, HEX WSHR SLTD U	1.000 EA
HW3001B01	003SS CUP WASHER, FOR #8 SCREW	1.000 EA
37EP3101A01SP	FR ENDPLATE,TEFC, 37 L&M, W/GREASER	1.000 EA
HW4500A01	1641B(ALEMITE)400 UNIV, GREASE FITT	1.000 EA
HW5100A06	W2420-025 WVY WSHR (WB)	1.000 EA
37EP3401T02	EP PU ENCL 309 BRG W/GRSR	1.000 EA
HW4500A01	1641B(ALEMITE)400 UNIV, GREASE FITT	1.000 EA
10XN2520A36	1/4-20X 2 1/4 HEX HD X	4.000 EA
HW1001A25	LOCKWASHER 1/4, ZINC PLT .493 OD, .255 I	4.000 EA
XY3118A12	5/16-18 HEX NUT DIRECTIONAL SERRATION	4.000 EA
37FN3002A01SP	EXFN, PLASTIC, 9.00 OD, 1.155 ID	1.000 EA
51XB1214A20	12-14X1.25 HXWSSLD SERTYB	1.000 EA
07FH4007SP	IEC FH W/GRSR, NOTCH @ 6:00 & 3 FAN CVR	1.000 EA
51XW1032A06	10-32 X .38, TAPTITE II, HEX WSHR SLTD S	3.000 EA
HW4600A73	SEAL 1.748 X 2.375 X 0.250 FACE SEALING	1.000 EA
36CB4516	36 LIPPED CB LID	1.000 EA
37GS1001SP	GASKET, CONDUIT BOX LID, .06 THICK LEXID	1.000 EA
51XW0832A07	8-32 X .44, TAPTITE II, HEX WSHR SLTD SE	4.000 EA

Parts List (continued)		
Part Number	Description	Quantity
HW2501D15	KEY, 3/16 X 1.625	1.000 EA
HA7000A01	KEY RETAINER 7/8" DIA SHAFT	1.000 EA
85XU0407S04	4X1/4 U DRIVE PIN STAINLESS	2.000 EA
LB1115	LABEL,LIFTING DEVICE	1.000 EA
MJ1000A75	GREASE, POLYREX EM EXXON (USe 4824-15A)	0.050 LB
MG1000G27	MED CHARCOAL METALLIC GREY	0.028 GA
HA3104A14	THRUBOLT- 5/16-18 X12.125(OHIO)	4.000 EA
LB1172A01	CUSTOM MTR CARTON LABEL LASER PRINTER	1.000 EA
LC0005E01	CONN.DIA./WARNING LABEL (LC0005/LB1119)	1.000 EA
NP1256L	ALUM UL CSA CC	1.000 EA
G0PA1000	SPCL PACKAGING	1.000 EA
MN416A01	TAG-INSTAL-MAINT no wire. (100/bx) 8/12	1.000 EA

Performance Data at 460V, 60Hz, 10.0HP (Typical performance - Not guaranteed values)

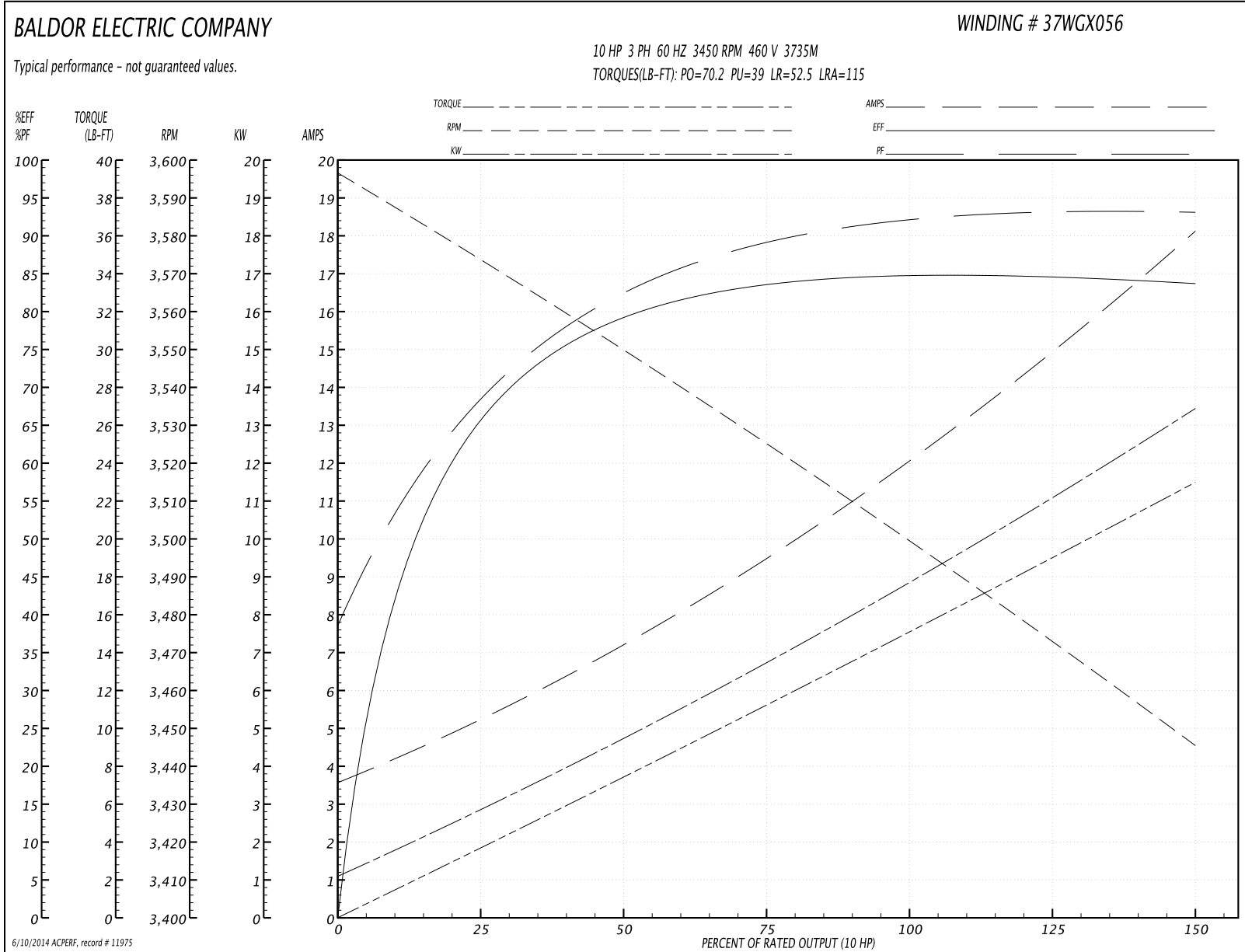
General Characteristics

Full Load Torque:	15.1 LB-FT	Start Configuration:	DOL
No-Load Current:	3.75 Amps	Break-Down Torque:	70.2 LB-FT
Line-line Res. @ 25°C.:	1.17 Ohms A Ph / 0.0 Ohms B Ph	Pull-Up Torque:	39.0 LB-FT
Temp. Rise @ Rated Load:		Locked-Rotor Torque:	52.5 LB-FT
Temp. Rise @ S.F. Load:		Starting Current:	115.0 Amps

Load Characteristics

% of Rated Load	25	50	75	100	125	150	S.F.
Power Factor:	69.0	83.0	89.0	92.0	93.0	94.0	93.0
Efficiency:	67.4	78.7	83.9	83.9	84.5	83.9	84.3
Speed:	3571.0	3550.0	3527.0	3501.0	3474.0	3444.0	3485.0
Line Amperes:	4.99	6.95	9.38	12.3	15.0	18.0	13.9

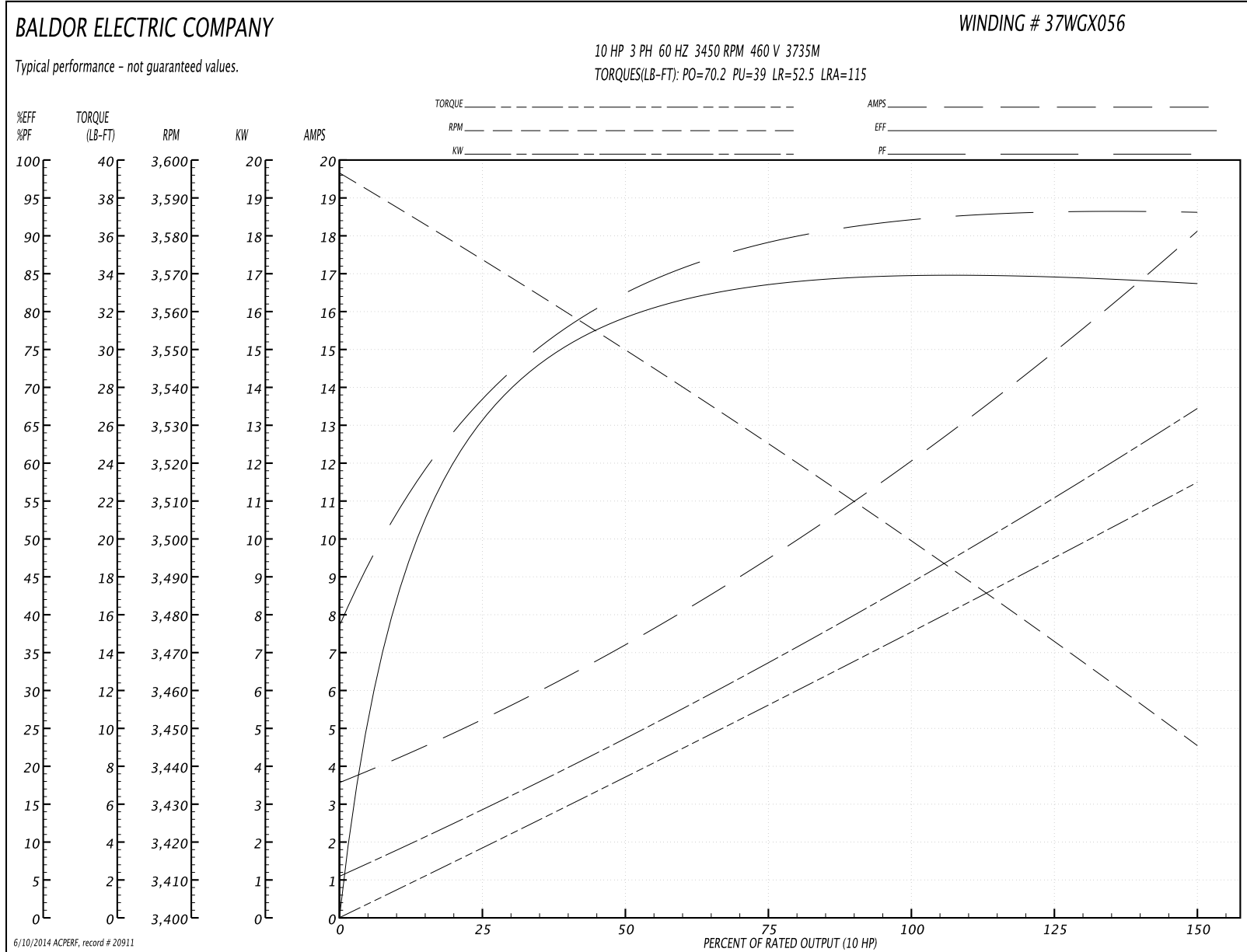
Performance Graph at 460V, 60Hz, 10.0HP Typical performance - Not guaranteed values

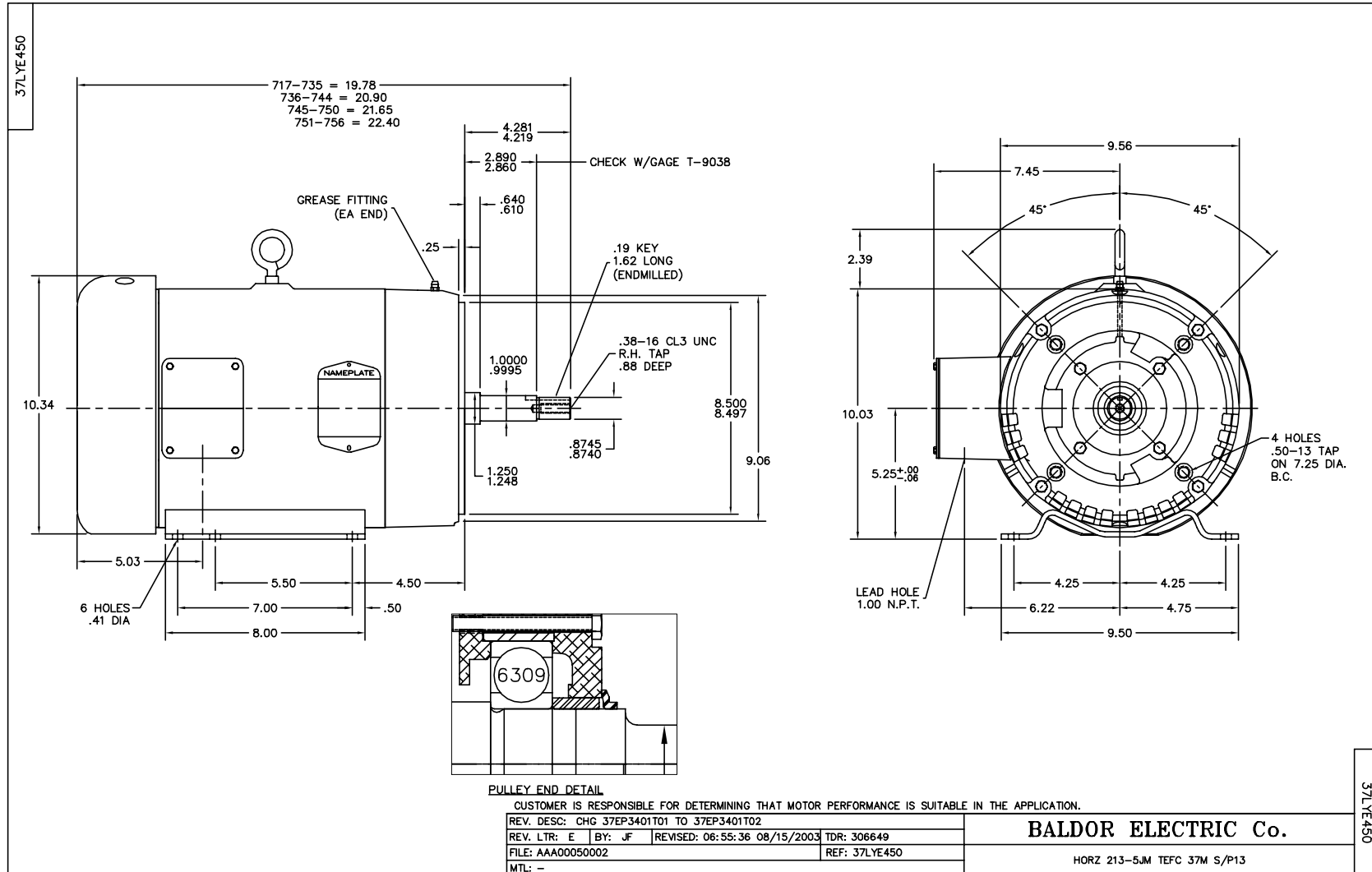


Performance Data at 460V, 60Hz, 10.0HP (Typical performance - Not guaranteed values)

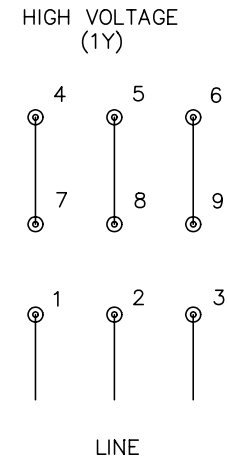
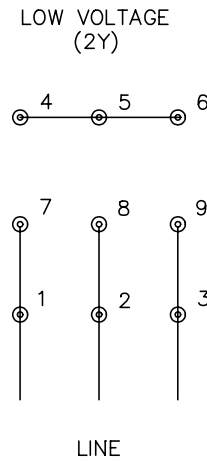
General Characteristics							
Full Load Torque:	15.1 LB-FT			Start Configuration:	DOL		
No-Load Current:	3.75 Amps			Break-Down Torque:	70.2 LB-FT		
Line-line Res. @ 25°C.:	1.17 Ohms A Ph / 0.0 Ohms B Ph			Pull-Up Torque:	39.0 LB-FT		
Temp. Rise @ Rated Load:				Locked-Rotor Torque:	52.5 LB-FT		
Temp. Rise @ S.F. Load:				Starting Current:	115.0 Amps		
Load Characteristics							
% of Rated Load	25	50	75	100	125	150	S.F.
Power Factor:	69.0	83.0	89.0	92.0	93.0	94.0	93.0
Efficiency:	67.4	78.7	83.9	83.9	84.5	83.9	84.3
Speed:	3571.0	3550.0	3527.0	3501.0	3474.0	3444.0	3485.0
Line Amperes:	4.99	6.95	9.38	12.3	15.0	18.0	13.9

Performance Graph at 460V, 60Hz, 10.0HP Typical performance - Not guaranteed values





CD0005



NOTES:

1. INTERCHANGE ANY TWO LINE LEADS TO REVERSE ROTATION.
2. OPTIONAL THERMOSTATS ARE PROVIDED WHEN SPECIFIED.
3. ACTUAL NUMBER OF INTERNAL PARALLEL CIRCUITS MAY BE A MULTIPLE OF THOSE SHOWN ABOVE.
4. LEAD COLORS ARE OPTIONAL. LEADS MUST ALWAYS BE NUMBERED AS SHOWN.

REV. DESC: REVISE TO SHOW OPTIONAL COLORS			
REV. LTR: E	BY: JLP	REVISED: 01/19/99 10:15	TDR: 0171435
9000D		FILE: AAA00005140	MDL: -
		MTL: -	

BALDOR ELECTRIC Co.

3PH, DV, 9 LEADS

CD0005